

# Kegel Recreation Easy Street



<b>Oil Pattern Distance:</b>	<b>38 Feet</b>	<b>Reverse Brush Drop:</b>	<b>38 Feet</b>	<b>Oil Per Board:</b>	<b>55 uL</b>
<b>Forward Oil Total:</b>	<b>11.99 mL</b>	<b>Reverse Oil Total:</b>	<b>12.595 mL</b>	<b>Volume Oil Total:</b>	<b>24.585 mL</b>
<b>Forward Boards Crossed:</b>	<b>218 Boards</b>	<b>Reverse Boards Crossed:</b>	<b>229 Boards</b>	<b>Total Boards Crossed:</b>	<b>447 Boards</b>

	Start	Stop	Loads	Speed	Crossed	Start	End	Feet	T.Oil
1	2L	2R	2	14	74	0.0	1.9	1.9	4070
2	10L	10R	4	18	84	1.9	12.1	10.2	4620
3	13L	13R	4	18	60	12.1	22.3	10.2	3300
4	2L	2R	0	18	0	22.3	24.0	1.7	0
5	2L	2R	0	22	0	24.0	33.0	9.0	0
6	2L	2R	0	30	0	33.0	38.0	5.0	0

Conditioner:  
Type In or Select One

TransferType:  
Type In or Select One

Forward



Reverse



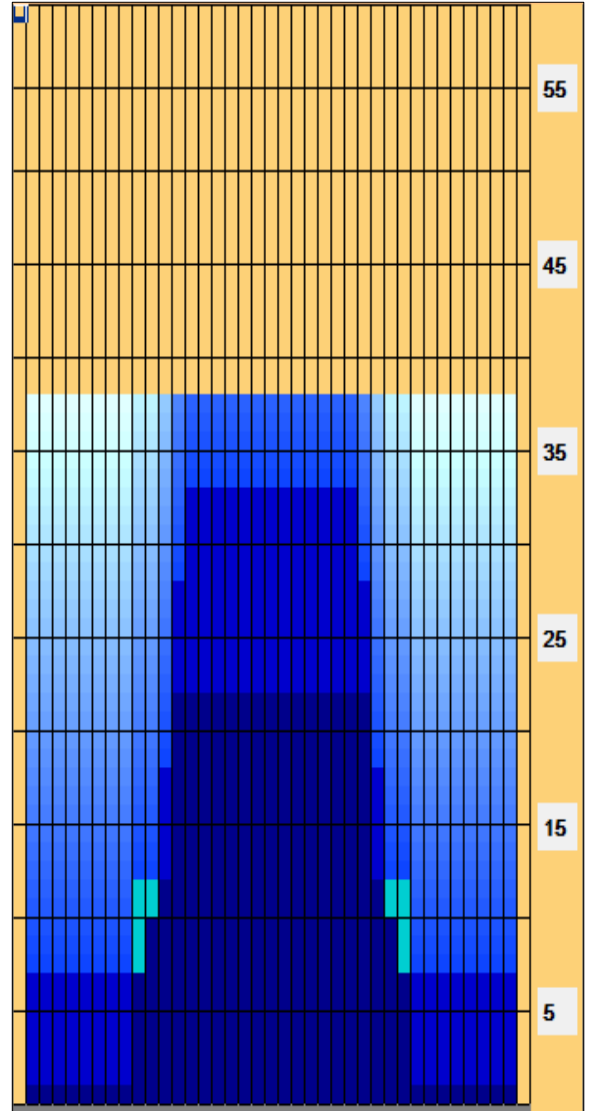
Combined



Buff



	Start	Stop	Loads	Speed	Crossed	Start	End	Feet	T.Oil
1	2L	2R	0	30	0	38.0	33.0	-5.0	0
2	14L	14R	2	18	26	33.0	27.9	-5.1	1430
3	13L	13R	4	18	60	27.9	17.7	-10.2	3300
4	12L	12R	4	14	68	17.7	9.8	-7.9	3740
5	11L	11R	2	10	38	9.8	7.0	-2.8	2090
6	2L	2R	1	10	37	7.0	5.6	-1.4	2035
7	2L	2R	0	10	0	5.6	0.0	-5.6	0



**EASY STREET - 7938** Because of the medium distance of this pattern, it is favorable to many different styles and ball choices. Bowlers with higher rev rates can easily swing the ball and bowlers with lower rev rates can play more direct. This pattern is just like walking down EASY STREET with no worries on a nice summer day.

Item	3L-7L:18L-18R	8L-12L:18L-18R	13L-17L:18L-18R	18L-18R:17R-13R	18L-18R:12R-8R	18L-18R:7R-3R
Description	Outside Track:Middle	Middle Track:Middle	Inside Track:Middle	Middle:Inside Track	Middle:Middle Track	Middle:Outside Track
Track Zone Ratio	7.67	3.29	1.02	1.02	3.29	7.67

