

StarBo 30V Juhlakisa



Oil Pattern Distance:	43 Feet	Reverse Brush Drop:	37 Feet	Oil Per Board:	50 uL
Forward Oil Total:	14.5 mL	Reverse Oil Total:	9.65 mL	Volume Oil Total:	24.15 mL
Forward Boards Crossed:	290 Boards	Reverse Boards Crossed:	193 Boards	Total Boards Crossed:	483 Boards

	Start	Stop	Loads	Speed	Crossed	Start	End	Feet	T.Oil
1	2L	2R	2	18	74	0.0	2.5	2.5	3700
2	11L	11R	6	18	114	2.5	17.8	15.3	5700
3	12L	12R	6	18	102	17.8	33.1	15.3	5100
4	2L	2R	0	22	0	33.1	38.0	4.9	0
5	2L	2R	0	26	0	38.0	43.0	5.0	0

Conditioner:
Type In or Select
One

TransferType:
Type In or Select
One

Forward

Reverse

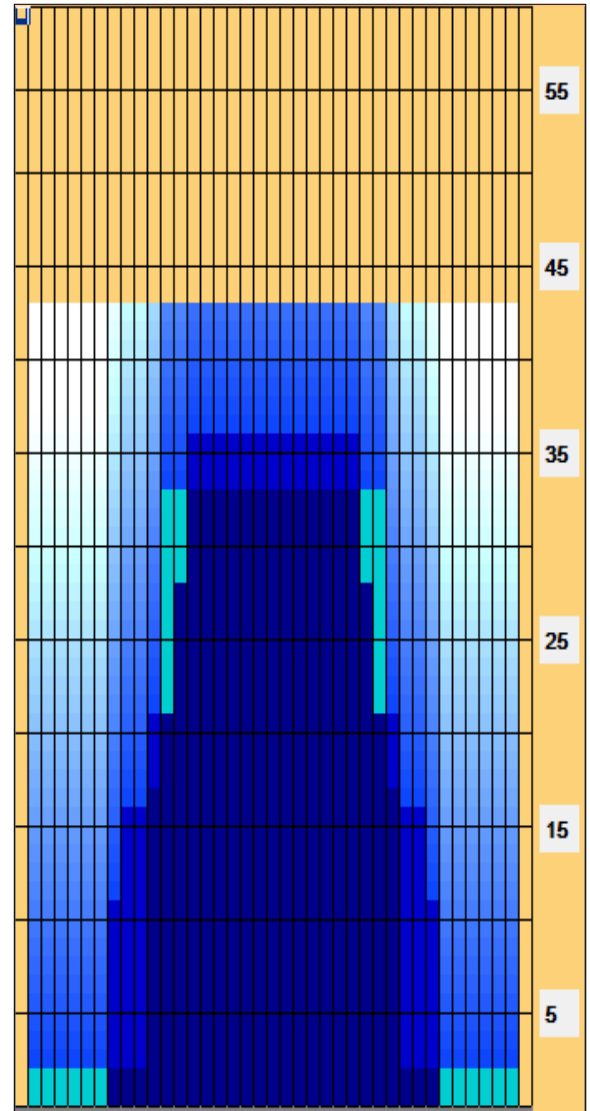
Combined

Buff

	Start	Stop	Loads	Speed	Crossed	Start	End	Feet	T.Oil
1	2L	2R	0	26	0	43.0	36.0	-7.0	0
2	14L	14R	3	18	39	36.0	28.4	-7.6	1950
3	13L	13R	3	18	45	28.4	20.8	-7.6	2250
4	11L	11R	2	18	38	20.8	15.7	-5.1	1900
5	9L	9R	2	18	46	15.7	10.6	-5.1	2300
6	8L	8R	1	18	25	10.6	8.1	-2.5	1250
7	2L	2R	0	14	0	8.1	0.0	-8.1	0

Forward Reverse More

Because the element Neon has no true chemical compounds, meaning it can't join with other elements, we've limited this oil pattern to Terrain only. The Neon oil pattern also crosses three more boards than the Helium pattern from the low point to the high point which means even though the ratio is slightly higher on the Neon pattern, for many styles it could play slightly more difficult. But make no mistake about it, when bowling on the Neon oil pattern your scores will still light up the place!



Item	3L-7L:18L-18R	8L-12L:18L-18R	13L-17L:18L-18R	18L-18R:17R-13R	18L-18R:12R-8R	18L-18R:7R-3R
Description	Outside Track:Middle	Middle Track:Middle	Inside Track:Middle	Middle:Inside Track	Middle:Middle Track	Middle:Outside Track
Track Zone Ratio	12.5	2.78	1.02	1.02	2.78	12.5

